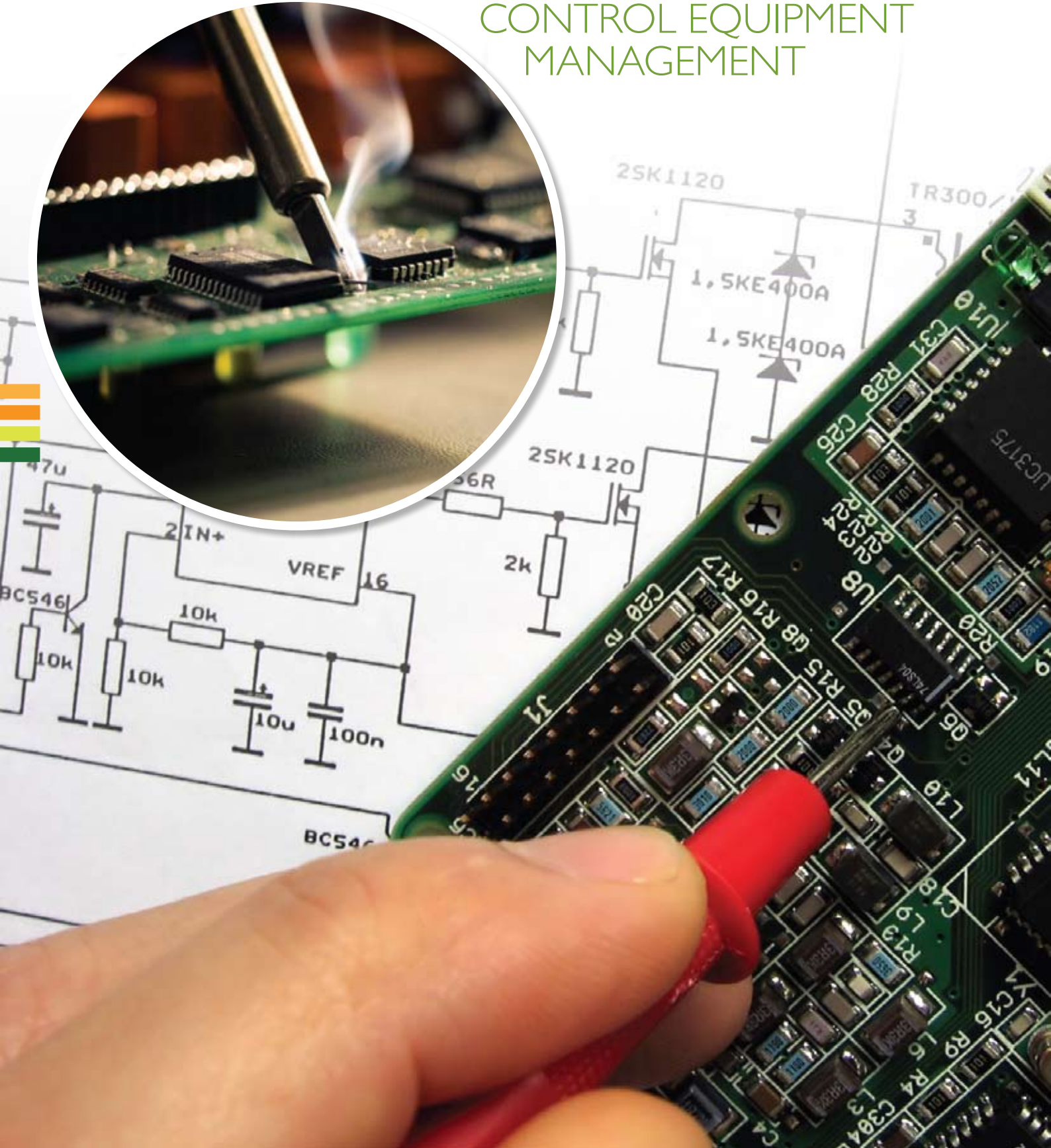
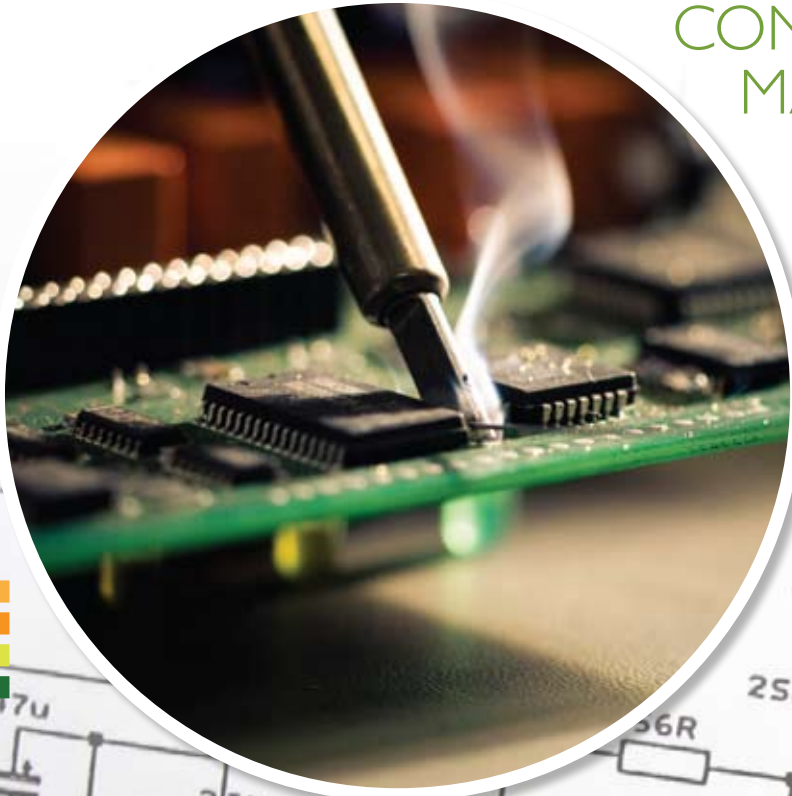


ROMCONTROL

complete electronic assets management

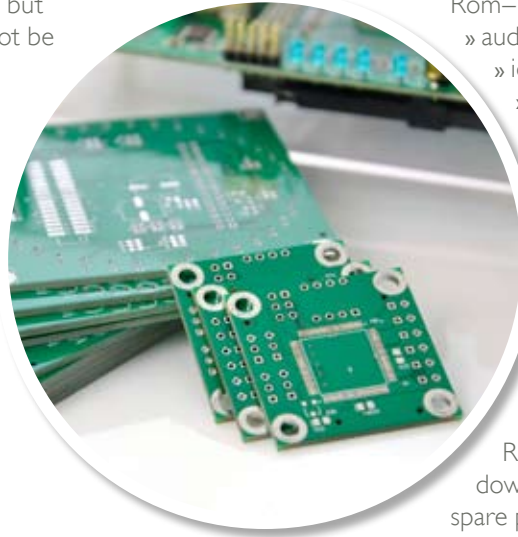
ELECTRONIC AND PROCESS CONTROL EQUIPMENT MANAGEMENT



THE FACTS AND THE SOLUTION

The facts:

- » Electronic equipment will fail but the timing of the failure cannot be predicted.
- » Installed electronic and process control equipment becomes obsolete much faster than the life expectancy of associated equipment.
- » Replacing an entire system when an obsolete subcomponent fails is not always financially feasible.
- » You cannot store spares for every asset. Shelf life of electronic equipment is very short.
- » Most companies do not maintain electronic and process control equipment.
- » When the electronic or process control equipment is down, the entire production line is down, impacting adversely customer service and resulting in unnecessary cost.



Rom-Control is the solution:

Rom-Control will:

- » audit your installed base and spare parts levels.
- » identify your critical assets.
- » suggest an asset maintenance program.
- » suggest the appropriate spare parts maintenance strategy.

Rom-Control can help increase your equipment reliability by managing your spare parts, set up repair exchange programs, maintain, refurbish or upgrade your electronic and process control equipment.

Rom-Control will help you reduce equipment downtime, increase asset reliability, reduce your spare parts holdings and significantly reduce your capital and maintenance expenditure.

EQUIPMENT AUDITING

This process consists of the following components:

One: installed base identification

- » Manufacturer
- » Model
- » Part Number
- » Age of equipment
- » Firmware version
- » Function
- » Parent/Child and peer asset relationship
- » Availability of OEM support
- » Availability of spare parts (internal and external)
- » Criticality level
- » Availability of identical items on the same site
- » Level of maintenance currently being carried on
- » Availability of upgrade plans
- » Original purchase price

Two: audit results delivery

- Delivering the audit results consists of:
- » Criticality based gap analysis
 - » Spare parts management
 - » Participation in repair-exchange programs
 - » Recommended level of ongoing maintenance
 - » Long term upgrade strategy

Three: followup

Following up on the actions generated by the gap analysis and corrective actions.

Find out where you are and where you want to be. We can help you get there.



EQUIPMENT MAINTENANCE

FASTER TURN-AROUND TIME

Priority on breakdown repairs not included in the repair-exchange program: we start investigating the fault within one hour of receiving the item.

MINIMISE ASSETS' DOWNTIME

Four hours emergency delivery of items under the repair-exchange program (as defined in the results of the criticality based analysis).

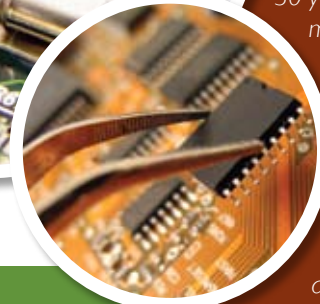
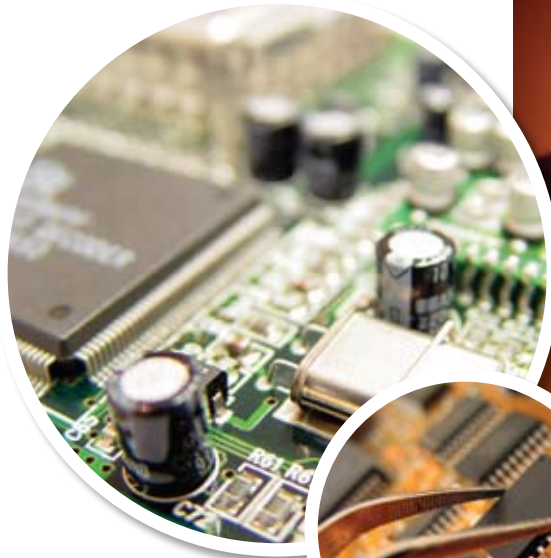
REPAIR GUARANTEED

Stocking of replacement electronic components required for the emergency repair of the first two critical items identified during the audit.

LOWER YOUR STOCK LEVELS

Participation in the repair-exchange program and spare parts management. Under this program, Rom-Control will maintain your spare parts for the critical items identified in the audit, repair and refurbish the damaged spare parts as well as provide you with access to a large range of spare parts other than the ones you own.

Reduce your breakdown downtime whilst decreasing your spare parts holding.



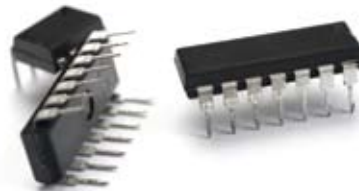
Our manufacturing facility is nearing 30 years since it was installed and a great many electrical components are no longer supported by the original manufacturers. Consequently we have utilised Eltiv (ROM-Control Pty Ltd) to refurbish a number of machine drives that were not serviceable. Eltiv have successfully refurbished many of our drives as well as providing a 12-month warranty and service support.

I would have no hesitation in recommending Eltiv (ROM-Control Pty Ltd) to any potential customers.

—Enzo Aganetti, Current Manufacturing Processor, Cylinder Head and Rotor Machining, Ford Motor Company

INCREASED RELIABILITY

“Hot Spare” for PLC /DCS Systems. Based on the criticality assessment, Rom-Control will setup two sets of your PLC or DCS system; one on site, the other at Rom-Control's premises. The system will comprise of the critical items identified during the audit, and will be powered up at all times. When a breakdown takes place, the hot spare will replace the broken down item which in turn, will be sent to Rom-Control for repair. Once repaired, the item will be tested in Rom-Control's hot spare system and then returned to your hot spare system.



EQUIPMENT REPAIR AND REFURBISHMENT

Rom-Control will repair and refurbish any electronic, process control or test equipment, irrespective of age, function or manufacturer. We will find the fault, repair the fault and then pro-actively replace all the other components we know from experience are likely to fail in the future. We will identify and rectify any faults in the tracks, joints, connectors or the board itself. We will return the renewed item to you, ready to be placed back in production as a plug-and-play solution, backed by our one year warranty.



NEW LIFE TO YOUR
ELECTRONIC EQUIPMENT

*Any asset, irrespective of
age, brand or function!*

YOUR SINGLE POINT OF CALL FOR ALL YOUR ELECTRONIC AND PROCESS CONTROL ASSET MANAGEMENT NEEDS!

Give us a call 03-95434544 or email rc@rom-control.com.au. Let us show you how we can reduce your maintenance and capital cost whilst increasing your equipment reliability.

ROMCONTROL

Office B, 2-8 Buckland Street, Clayton, VIC, 3168. ABN: 35124628137. Phone: 03-95434544.
Fax: 03-95434611 Email: rc@rom-control.com.au Website: rom-control.com.au

QUALITY ASSURED COMPANY



AS/NZS ISO 9001:2008